



Charnières et pièces de fixation

↳ Fixations

↳ Fermeture à billes MS

↳ Laiton



Hinges and Fittings

↳ Fastenings

↳ Double Ball Catch MS

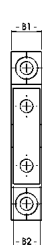
↳ Brass



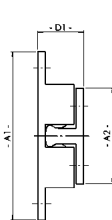
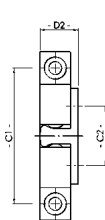
Fermeture à billes MS

Laiton

gerade



90°



Double Ball Catch MS

Brass



Application Application

Désignation Verrouillage rapide de porte, force de fermeture réglable, montage latéral ou frontal

Matériau Laiton

Surface Chromé

Fixation Par l'avant, utilisation de vis à tête fraisée

Conditionnement 1 pièce

Description Quick catch for doors, adjustable clamping force, 2 possible positions (sideways/frontal)

Material Brass

Surface Chrome plated

Fastening From the front, using countersunk screws

Pack Quantity 1 piece

Vis Screw	A1 [mm]	A2 [mm]	B1 [mm]	B2 [mm]	C1 [mm]	C2 [mm]	D1 [mm]	D2 [mm]	Poids [g] Weight [g]	Pièce N° Part N°
M3	44.0	25.0	8.0	7.0	35.5	15.5	12.0	10.0	16.0	FA-0930461
M3	49.0	29.0	9.0	7.5	39.5	18.5	13.0	12.0	23.0	FA-0930462
M4	60.0	35.0	11.0	9.0	50.0	23.5	15.5	13.5	40.0	FA-0930463
M4	69.0	40.0	13.0	12.0	58.0	30.0	18.0	15.5	67.0	FA-0930464