

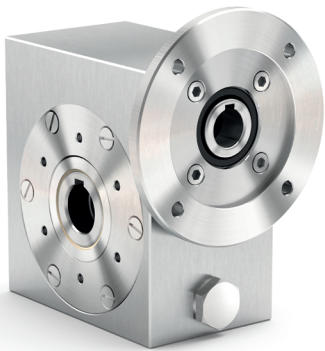
FEATURES

Caratteristiche

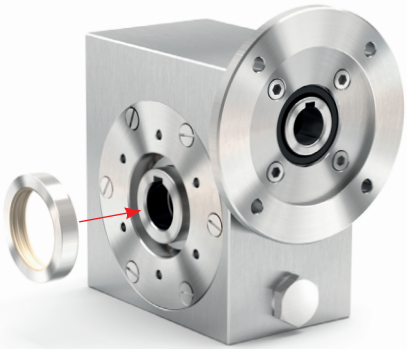
Stainless steel worm gearboxes

Riduttori a vite senza fine completamente in acciaio inox

Type <i>Tipo</i>	Torque <i>Coppia</i>	Center distance <i>Interasse</i>	Input power <i>Potenza in entrata</i>	Hollow output shaft <i>Albero cavo in uscita</i>	
I30	21 Nm	30 mm	0.09 ÷ 0.18 kW	ø14 mm	
I45	41 Nm	45 mm	0.12 ÷ 0.37 kW	ø18 mm	ø19 mm
I50	72 Nm	50 mm	0.12 ÷ 0.75 kW	ø25 mm	ø24 mm
I63	147 Nm	63 mm	0.37 ÷ 1.8 kW	ø25 mm	ø28 mm
I85	347 Nm	85 mm	0.55 ÷ 4.0 kW	ø35 mm	
I11	651 Nm	110 mm	1.1 ÷ 4.0 kW	ø42 mm	

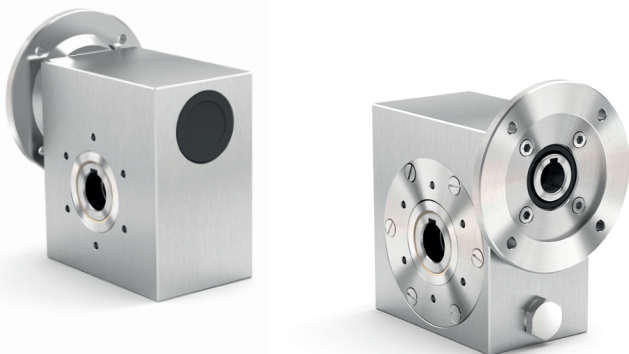


This product is:



Twin viton seals with stainless steel shield.

Anelli di tenuta in viton con schermo protettivo in acciaio inox.

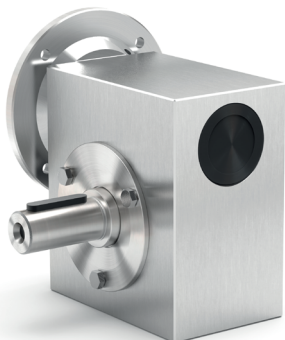


Mounting holes on both sides of the housing for versatile mounting.

Fori di montaggio in entrambi i lati della cassa.

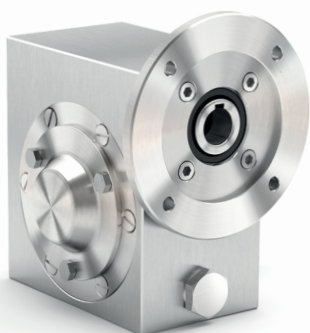
FEATURES

Caratteristiche



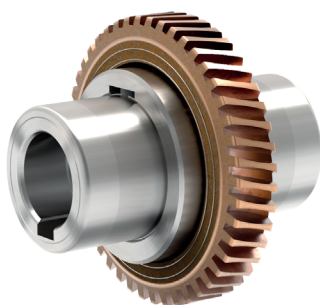
**Output shaft is produced in AISI 316L.
Special cover assures full protection of oil seals.**

Mozzo e albero in uscita in AISI 316L e coperchietto protettivo per anelli paraolio.



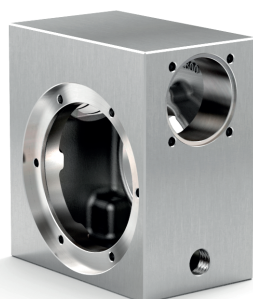
O-ring closure is used for a new oil seals cover.

Nuovo coperchietto protettivo per anelli paraolio chiuso con o-ring.



Removable hollow shaft with key for safe torque transmissions.

Albero cavo removibile con chiavetta mozzo/corona.



Special high tech housing finishing.

Finitura speciale sulla cassa.